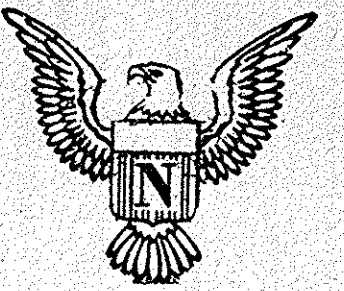


Final Architects Plans Received For St. Clair Memorial Hospital

Mt. Lebanon News



Mt. Lebanon's
Community
Newspaper

Eight Pages

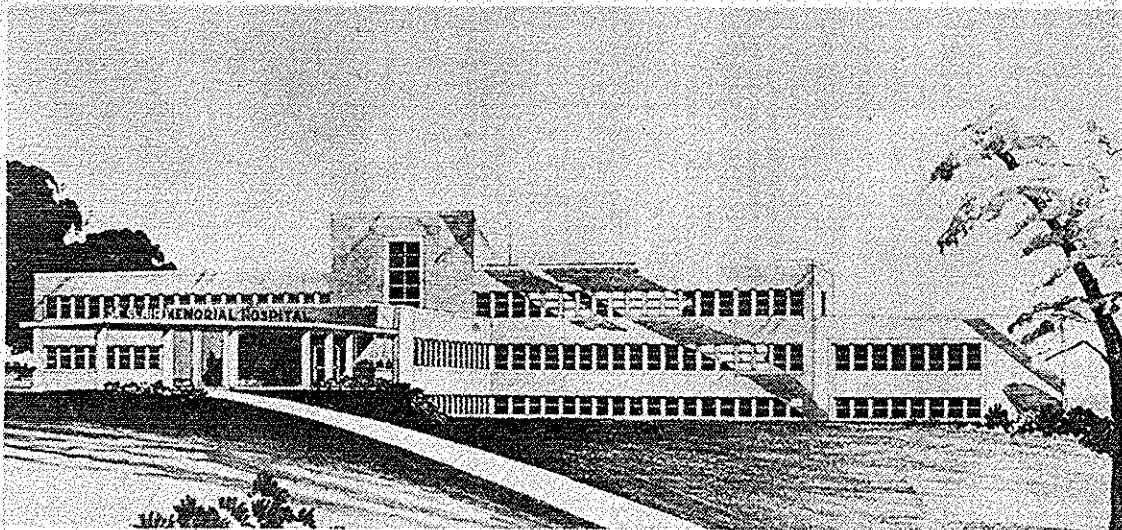
\$2.50 Per Year

Thursday, July 5, 1951

7¢ Per Copy

Vol. VI., No. 32.

Modern Hospital



This architects drawing shows the final appearance of the St. Clair Memorial Hospital which will be located at the Corner of Bower Hill and Seegar Roads. According to present plans, groundbreaking ceremonies for the 100-bed hospital will be held in the fall. Specifications for the hospital which will serve the South County area are now being let out for bids.

Local Draft Boards In Noticeable Slump

The lonliest place in town, much to the joy of the males between 18½ and 26, will be Allegheny County draft boards during July and August. Reason for this sudden change is the low quotas set up for those two months.

645 men is the total number of draftees throughout the state for July, while 100 is the local amount. In August, the state-wide total will climb to 854, with a 30 man rise over the previous call here.

The large number of National Guardsmen, reservists, and volunteers which the state has supplied over the past year is responsible for the 50% slash in normal quotas.

78 Pennsylvania doctors, dentists, and veterinarians will be inducted into the Army within the next month, receiving first lieutenant commissions, announced Col. Henry M. Gross, State draft director.

Council Passes Routine Matters

Dormont Borough Council held a quiet meeting this week in which minor routine business matters were discussed.

Tax Collector William N. Neel reported that \$25,000 of the tax duplicate had been collected in the first ten days of the collection period. Council had previously authorized a loan to provide operating money until some of the tax duplicate could be collected. With Mr. Neel's report, this loan became unnecessary and was cancelled by Council.

Council also authorized the transfer of excess money in the sinking fund to the general operating fund.

Possibly the most important action of Council was approving an ordinance calling for restricted parking on Dell Avenue. According to the ordinance, parking on the entire street will be limited to commercial areas only and then only for loading and unloading.

Lina alley, which is located behind the Kroger shopping center on West Liberty Ave., has been made a one-way street. Traffic will move only in the direction from Mississippi Ave., to Wisconsin.

Council also unanimously passed a resolution requesting the State Highway Department to make a traffic survey in Dormont in an attempt to find some method of rerouting some of the traffic off of West Liberty Ave. The survey will be done at a cost of \$1,000 to the borough.

Resident New 'Veep'

Robert L. Smith, Mt. Lebanon resident, will take over the office of vice president of the Quarter Century Club.

The step-up follows a recent election held at the fourth annual luncheon at South Park, when club members, comprised of veteran employees of The Manufacturers Light and Heat Company, held elections for their new officers.

Mr. Smith resides at 907 Riehl Rd., and formerly had his home at 904 Vermont Ave., Mt. Lebanon.

By-Pass Will Save Minutes For Mt. Lebanon Commuters

Your Mt. Lebanon News reporter to ok a "sneak preview" ride over the new West End by-pass this week and what he saw leads him to the conclusion that it will be almost as much of a boon to Mt. Lebanon commuters as were the Liberty Tubes.

Travelling under 35 miles an hour, your reporter was able to drive over the route in about one minute and eighteen seconds.

The same day, it took, four minutes to travel from the Banksville traffic circle to Carson street, the span of the by-pass, by using the old route. And it is no secret that four and a half minutes would be record time for the trip during rush hours.

Carved Out Of Hillside

The State Highway Department has moved thousands of tons of dirt and rock as it literally carved the highway out of the hillside.

The by-pass has a gentle slope with the high side on Carson St., and one gentle curve approximately in the middle of the stretch in the middle of the stretch.

A rock bluff rises almost perpendicular to the highway on the north side. A roll curb center strip separates the two inbound lanes from the outbound ones.

Almost Finished

Possibly a hundred feet of the outbound lane is yet to be completed.

It would seem that the only two possible "bottlenecks" that could arise from the by-pass are at the Banksville traffic circle and the Carson street connection.

Traffic patrolmen could probably maintain the flow of traffic at both points during rush hours.

Take it from us, if you commute downtown via Banksville road, you are going to be pleasantly surprised one of these days.

St. Clair Hospital Ground Breaking Set For Fall

Seven years of hard work and unselfish efforts by residents of the South Hills area seem ready to bear fruit with the announcement this week that final architects plans have been received for the St. Clair Memorial Hospital. The urgently needed institution to be constructed on Bower Hill Road will cost an estimated \$1,350,000.

Edward F. Betker, president of the St. Clair Memorial Hospital Association announced that specifications for the 100 bed hospital, which will sever the South County Area, are now being put out for bids.

According to present plans, Mr. Betker expects the bids to be accepted by August 15, and the long-awaited ground breaking to take place this fall.

Betker revealed that the bids are being released despite the fact that only \$540,000 has been raised toward the total of \$1,350,000 needed to build and equip the hospital.

A public institution, the St. Clair Memorial Hospital will serve all creeds and races and accept cases from regularly qualified physicians approved by the Allegheny County Medical Association.

Located at Bower Hill and Seegar Roads, the new hospital will serve the South County area, including Mt. Lebanon, Dormont, Bridgeville, Carnegie, Greentree, Bethel, Scott and Upper St. Clair Townships, Heidelberg and Castle Shannon.

At present, there are no hospital facilities in the South Hills and emergency cases must be taken to Pittsburgh hospitals with the resultant loss of precious time.

The St. Clair Memorial Hospital was first conceived in 1944 by a group of South Hills Civic leaders. In 1945, a charter was filed with the state, and the following year a 30-acre tract of land was purchased.

A campaign to secure corporate gifts was started in February and plans to build were further advanced this week with the announcement that specifications had been released for bids.

Special Gifts Swell Total

During the next few months, Directors of the Association hope to obtain \$250,000 in corporate and special gifts. When ground is broken next fall, there will be a public campaign to raise the remaining half million dollars.

When completed, the St. Clair Memorial Hospital will offer all general and some specialized services, including diagnostic services. Deep therapy and involvements requiring specialists and services more readily available in Pittsburgh will not be handled at St. Clair Memorial Hospital.

Dormont To Curb Alley Dumping

Dormont Burgess James K. K. Smith announced this week that he had issued instructions to the Police Department to crack down on the indiscriminate dumping of refuse in Borough Alleys. Burgess Smith stated that many alleys were becoming virtually impassable because of hedge clippings and other debris that their presence constituted a severe fire hazard. As part of his enforcement campaign, "NO DUMPING" signs were going to be posted in every alley, and policemen were ordered to apprehend all violators.

The penalty for illegal dumping carries a fine of one to twenty-five dollars.

Frederick, Lynn Top Able Youths

Two Mt. Lebanon Seniors ranked highest among the 105 high school students who were presented last week with Certificates of Merit by the Civic Club of Allegheny County through its Exceptionally Able Youths Committee.

In first place was Mary Ann Frederick, 95 Ordale Blvd., who plans to enroll in a liberal arts course at Vanderbilt University this fall. Ranking second was James D. Lynn, 15 Edgewood Ave. James will enter Princeton University next semester, where he will study journalism.

James and Mary were among the 504 high school students

(Continued on page 5)

Apartment Necessary

They believe that apartments are necessary to accommodate people whose families have grown and established homes of their own. Planners maintain that they no longer need large homes and yet still want to live in Mt. Lebanon. They will eventually become apartment dwellers and if there are none available they will be forced to leave Mt. Lebanon and seek accommodations elsewhere.

Objections were also raised to the Planners' provisions for neighborhood shopping centers as provided by the ordinance.

Planners have taken most shopping districts in the Township and

MUSIC GROUP NAMES STARS

Gas Headquarters Will Move Here

The Manufacturers Light and Heat Company announced this week that the headquarters for the gas distribution district No. 5 will be located in the building now housing the McCrory Motor company at the corner of Washington Rd. and Pecquet Ave.

According to G. E. Wilson, superintendent of gas distribution, the building was purchased from Henry P. and Gertrude McCrory. The sale price was not announced.

Mr. Wilson also stated that the building will house a gas appliance show room in addition to the distribution facilities.

After considerable remodeling is completed, Forbes W. Burdette, district manager, will have his office in the new building.

Home Service Department

A home service kitchen and auditorium will be created in the former automobile agency. Staffed by gas company home economists, it will assist the home service workers in their cooperative activities with customers, churches, women's clubs and youth organizations.

Part of the building will be used as a gas service headquarters for the South Hills area. Service to local customers will be improved by the transfer of the gas distribution department's short work sending and receiving base station from the present Millbridge St. location to the new district headquarters.

Radio Controlled Cars

This dispatching office is in constant communication with the company's fleet of radio-equipped customer service cars and trucks at work throughout the South Hills area.

Remodeling of the McCrory building will begin sometime in July. The formal opening of the building will take place after Labor Day.

SEND IN YOUR POLL

Over 8,000 copies of Parking Poll were mailed to residents of Mt. Lebanon recently. The poll is being taken "to determine public opinion on the question of parking."

Township Manager David D. Rowlands reports that hundreds of polls have been returned to the township office already.

Artists Coming Here



Resident Accepts Managerial Post



WILLIAM G. MEHAFFEY

After being offered a top office with the Continental Assurance Company, William G. Mehaffey has accepted the offer and will now assume duties as new Pittsburgh Branch Manager.

Mr. Mehaffey, residing on Iroquois Drive, Mt. Lebanon, is a well known member of the Mt. Lebanon Civic League and an elder of the Beverly Heights United Presbyterian Church.

As a widely known businessman in Pittsburgh Underwriting circles, chiefly through his association with the Prudential Insurance Company where he served in various field and managerial capacities.

Mr. Mehaffey's start came in 1932 when he became a personal producer and continued with that work for ten years. He then was made Agency Assistant and assigned a production unit through which he earned a promotion to Assistant Manager in 1945.

The new position of Pittsburgh Branch Manager will entail a majority of work on interests of brokers and surplus writers.

A graduate of the University of Pittsburgh, Mr. Mehaffey is an active member of the Pittsburgh Life Underwriters Association, a director of the local chapter of Charter Life Underwriters, and past president of the Supervisors Club.

Rodgers & Hammerstein Will Open Fall Series

Music for Mt. Lebanon will offer the most ambitious and impressive list of concert attractions in their history with the 1951-52 series announced publicly today.

To open their season on October 8 they have booked the outstanding new event in the music world - RODGERS & HAMMERSTEIN NIGHTS. Under the personal supervision of Richard Rodgers and Oscar Hammerstein, a concert orchestra, concert chorus and four principals will sing the world-famed music written by this midas-pair of the American Theatre.

The Lovely music of "South Pacific," "The King & I," "Oklahoma!" "Allegro," "Carousel" and "State Fair" will echo the walls of Mellon Auditorium. It is especially noteworthy that in bringing this outstanding event to Pittsburgh, Music for Mt. Lebanon scooped every other musical group in the city.

James Melton Will Sing

Second event of the series, on November 19, will bring the top box-office attraction in the entire nation to Pittsburgh - Mr. James Melton. James Melton's fabulous career in films, radio, opera, concert and lately television, have made him literally America's leading tenor. Mr. Melton's only appearance in Pittsburgh this season will be with Music for Mt. Lebanon.

Third event, January 21, marks the Pittsburgh debut of a great American pianist, Sascha Gorodnitzki. Mr. Gorodnitzki for some unexplainable reason has never been afforded a Pittsburgh hearing.

An established artist, his annual Carnegie Hall concerts in New York are S.R.C.

For the fourth and final concert, April 5, Music for Mt. Lebanon has scheduled the annual concert of the Pittsburgh Symphony Orchestra playing music that the people can understand and appreciate, with Mildred Dilling as soloist. Vladimir Dakaleinkoff will conduct. Miss Mildred Dilling is one of the leading harp soloists in the world and has appeared in just about every concert hall in the world.

Sixth Season of Music

This season marks the sixth Music for Mt. Lebanon series, and these events as announced fulfill this organization's pledge to bring only the finest music to Pittsburgh and to Mt. Lebanon. It is indeed an honor to Mt. Lebanon that Music for Mt. Lebanon's programs and direction are achievement-wide recognition, and earning a reputation among New York concert managers as one of the most impressive and ambitious new musical organizations in America.

Reconstruction Of Washington Road Possible If State Agrees

Reconstruction of Washington Road from the end of the new section paved last year near Alfred Street to Ordale Boulevard may be accomplished in 1952.

Negotiations instituted by Mt. Lebanon officials with the State Highway Department would complete the reconstruction of this traffic artery through the township if successful.

Township representatives met with the State Highway engineers last week to discuss the project. It would include the possible removal of the hump at Main Entrance drive and new curbs.

Blacktop Is Alternative

The alternative to complete reconstruction is a resurfacing job with 2½ inches of blacktop which the state is prepared to do.

Decision on the paving plans for the Southern section of Washington road is expected within weeks.

Another big repaving job being considered by Mt. Lebanon officials in cooperation with the State Highway Department would reconstruct Beverly Road and Cedar Blvd.

Federal Funds May Be Available

This may be done at a large saving to the township if Federal funds available through the state can be obtained to match dollar-for-dollar the cost to the township for the reconstruction of these widely used highways.

The total cost of this project is estimated at \$100,000, half of which could be contributed by the State.

Immediate action on the part of the Allegheny County Highway Department to widen and improve Bower Hill Road from Cochran Road to the township line is also sought.

Used to Move Buildings

The Township's cost involved primarily the moving of commercial buildings necessary to eliminate the "bottleneck" between Alfred Street and Cedar Blvd. and the installation of some curbs and sidewalks.

This year, the township Commissioners adopted a policy requiring builders to pay 60 percent of the cost of constructing new streets and sewers at the time the contract is let.

They claim this means sound

(Continued on page 5)

Town Meeting Audience



Members of the Mt. Lebanon Planning Commission strike various poses of contemplation as they listen to a citizens remarks on the Master Plan at the Town Meeting this week. In the back row, Lawrence Rank and Mrs. F. C. Wagner seem amused at the remarks of the speaker, Francis McMichael studies the technicalities of the re-

UNIQUE ORGANIZATION

Many new residents of Mt. Lebanon may be unaware of how unique an organization MUSIC FOR MT. LEBANON really is.

An independent non-profit corporation, it is managed and directed by a Board of Directors headed by F. S. Olmsted, President; Joseph Esposito, Vice-President; and H. R. Owens, Treasurer. The group books directly with the New York managers, and only thru unselfish efforts is it possible to present the top artists in the nation at such ridiculously low series prices.

Tickets for the Mellon Auditorium are all reserved, and the series tickets are sold at a 25% discount -- in other words, the four concerts actually cost the price of only three concerts. For information write to MUSIC FOR MT. LEBANON, Box 1081, Pittsburgh 16, Pa., or telephone LEhigh 1-5708

WILBUR TAKES TRIP FOR SEARS-ROEBUCK

George H. Wilbur, of 235 Catalpa Pl., left recently for Chicago to attend his second meeting as a member of the advisory council of the Sears and Roebuck profit sharing fund.

Manager of the laundry appliances department of the North Side Sears Store, Mr. Wilbur is meeting with 15 other members representing stores, mail order outlets, and factories throughout the country.

Mr. Wilbur joined the Company in 1928 at the Harrisburg Store. He is a native of the capital city. He is married and has three children.